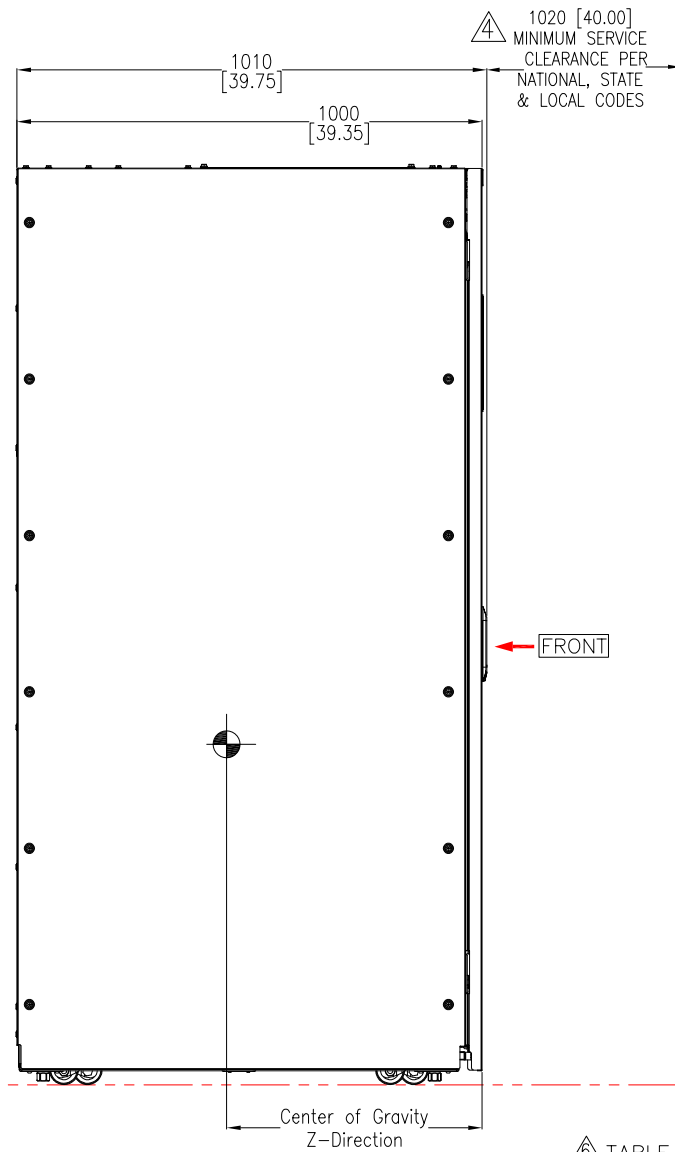
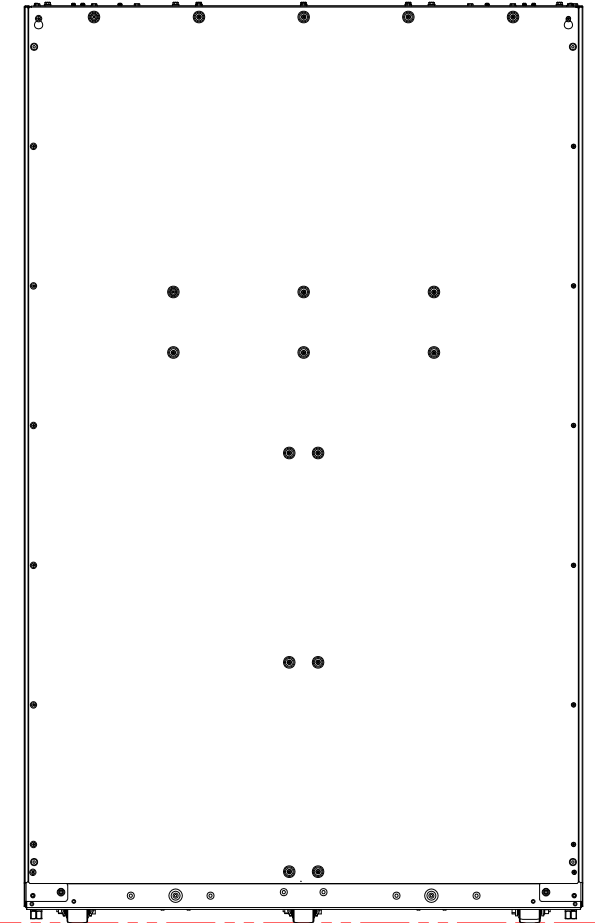


FRONT VIEW



LEFT SIDE VIEW



REAR SIDE VIEW

TABLE-1

| UPS SKU#/CR# | Rating | Applicable number of Power modules | Weight in kg [lb] | Center of Gravity in mm [Inches] | | |
|-----------------|--------|------------------------------------|-------------------|----------------------------------|------------|--------------|
| | | | | X-Distance | Y-Distance | Z-Distance |
| GVXL0K1250HS | N/A | 0 | 639 [1409] | 600 [23.6] | 935 [36.8] | 469.5 [18.5] |
| GVXL500K1250HS | 500kW | 4 | 851 [1876] | 599 [23.5] | 757 [29.8] | 393 [15.5] |
| GVXL600K600HS | 600kW | 5 | 904 [1993] | 582 [22.9] | 739 [29.0] | 380 [14.9] |
| GVXL625K1250HS | 625kW | 5 | 904 [1993] | 582 [22.9] | 739 [29.0] | 380 [14.9] |
| GVXL750K1250HS | 750kW | 6 | 957 [2110] | 599 [23.5] | 721 [28.4] | 368 [14.5] |
| GVXL875K1250HS | 875kW | 7 | 1010 [2227] | 584 [23.0] | 713 [28.0] | 358 [14.0] |
| GVXL1000K1250HS | 1000kW | 8 | 1063 [2344] | 599 [23.5] | 705 [27.8] | 348 [13.7] |
| GVXL1125K1250HS | 1125kW | 9 | 1116 [2460] | 585.5 [23.0] | 704 [27.7] | 340 [13.4] |
| GVXL1250KHS | 1250kW | 10 | 1169 [2577] | 599 [23.5] | 704 [27.7] | 332 [13.0] |

4 Power modules are pre-installed

- NOTES:
1. INSTALLATION SHALL COMPLY WITH ALL APPLICABLE NATIONAL, STATE AND LOCAL REGULATIONS.
 2. REFER TO PRODUCT DOCUMENTATION FOR ADDITIONAL DETAILS PRIOR TO INSTALLATION AND SITE PREPARATION WORK.
 3. ALL DIMENSIONS ARE IN MILLIMETERS [INCHES].
 4. CLEARANCE DIMENSIONS ARE MEANT FOR AIRFLOW AND SERVICE ACCESS ONLY. CONSULT WITH THE LOCAL SAFETY CODES AND STANDARDS FOR ADDITIONAL REQUIREMENTS IN YOUR LOCAL AREA.
 5. CABLE ENTRY IS FROM TOP OR BOTTOM OF THE UNIT. SIDE CAR IS REQUIRED FOR BOTTOM CABLE ENTRY.
 6. REFER TO TABLE-1 FOR APPLICABLE CR/SKU NUMBERS, UPS RATING, WEIGHT AND CENTER OF GRAVITY OF THE UNIT. THIS INFORMATION PROVIDES APPROXIMATE CENTER OF GRAVITY CALCULATION.
 7. OPERATING TEMPERATURE: 0°C TO 40°C [32°F TO 104°F].
 8. DOOR SWING-ROTATES FREELY 120°.
 9. PROTECTION CLASS IP20.

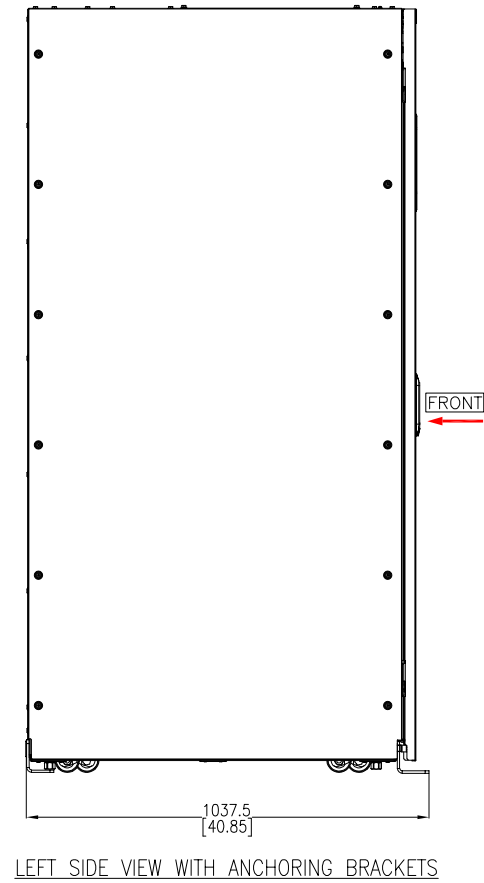
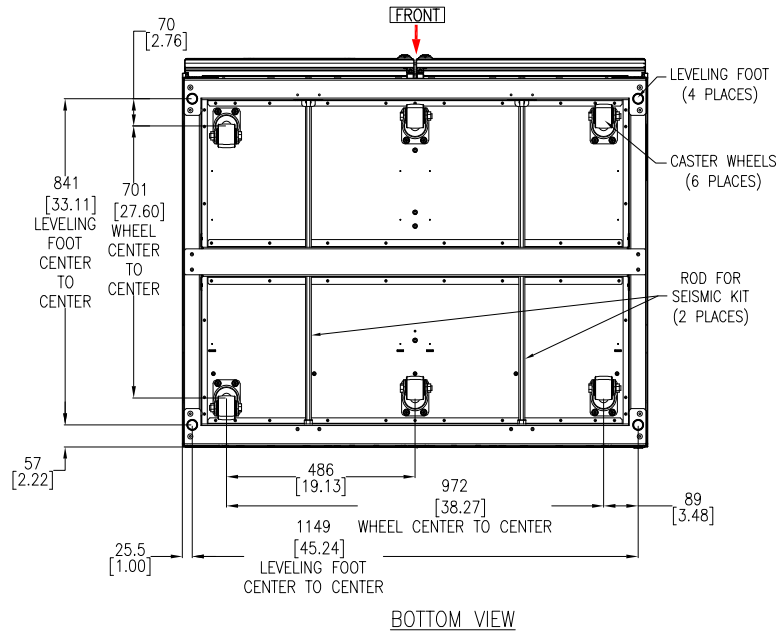
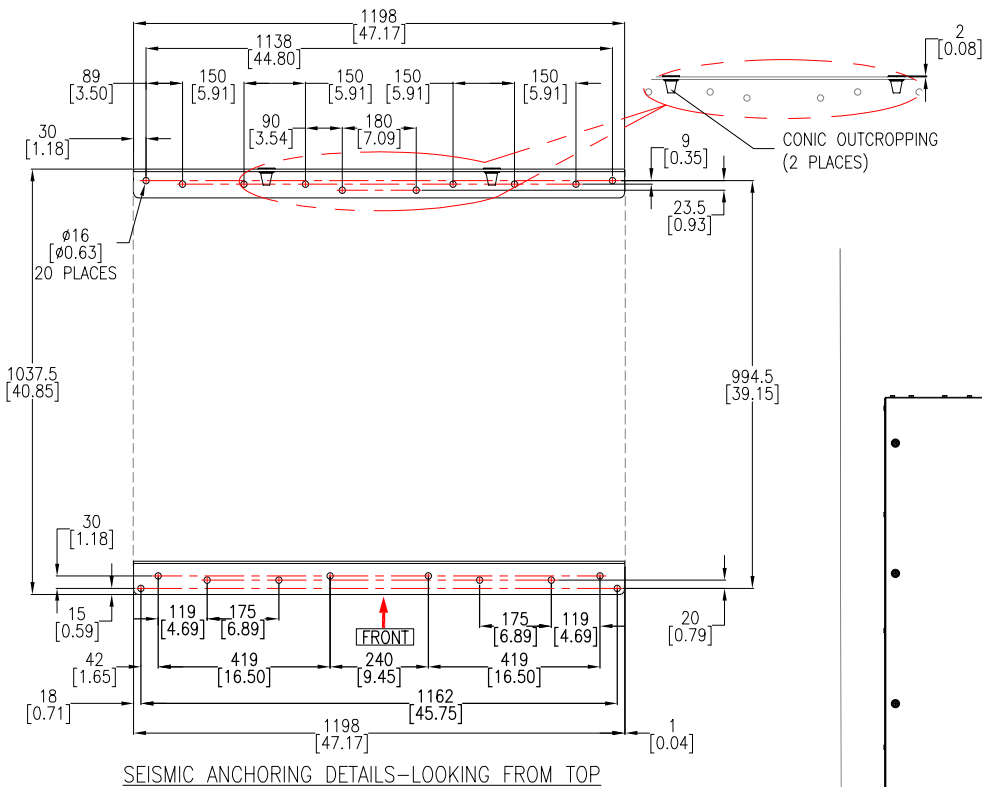
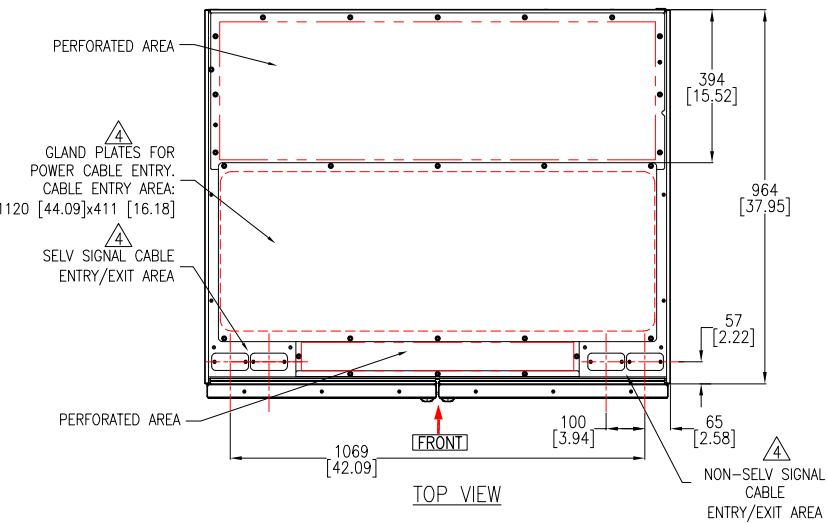
THIS DRAWING AND SPECIFICATIONS HEREIN ARE THE PROPERTY OF SCHNEIDER ELECTRIC AND SHALL NOT BE COPIED, REPRODUCED OR USED IN WHOLE OR IN PART, AS THE BASIS FOR THE MANUFACTURE OR SALE OF ITEMS WITHOUT WRITTEN PERMISSION FROM SCHNEIDER ELECTRIC. THIS DRAWING IS BASED UPON LATEST AVAILABLE INFORMATION AND IS SUBJECT TO CHANGE WITHOUT NOTICE.

Schneider Electric

TITLE: Galaxy VXL UPS
500kW - 1250kW
Input: 380/400/415V, 3PH, 50/60Hz, Single/Dual Mains
Output: 380/400/415V, 3PH, 50/60Hz
GENERAL ARRANGEMENT
PROJECT: SUBMITTAL DRAWINGS SHEET 1 OF 6

DWG NO: GVXL500-1250KHS
DRAWN: JAYAPRAKASH
ENGINEER: ChenLei BAO
APPROVED: Jerry LIU

REV. 0
FIRST ANGLE PROJECTION
23-AUG-24
29-SEP-24



- NOTES:
1. INSTALLATION SHALL COMPLY WITH ALL APPLICABLE NATIONAL, STATE AND LOCAL ELECTRICAL REGULATIONS.
 2. REFER TO PRODUCT DOCUMENTATION FOR ADDITIONAL DETAILS PRIOR TO INSTALLATION AND SITE PREPARATION WORK.
 3. ALL DIMENSIONS ARE IN MILLIMETERS [INCHES].
 4. DRILL/PUNCH HOLES IN PLATE AS PER REQUIREMENT. REMOVE PLATE FROM CABINET BEFORE DRILLING/PUNCHING.
 5. USE SEISMIC KIT TO SKU/CR# GVXLOPT002 IN SEISMIC ZONES.
- M12 HARDWARE OF STRENGTH GRADE 8.8 (MINIMUM) ARE TO BE USED TO MOUNT THE BRACKETS. PUSH THE UPS TO FINAL LOCATION WHERE REAR BRACKET IS ANCHORED TO THE FLOOR. USE SEISMIC ROD TO SECURE THE UPS WITH REAR ANCHORING BRACKET.

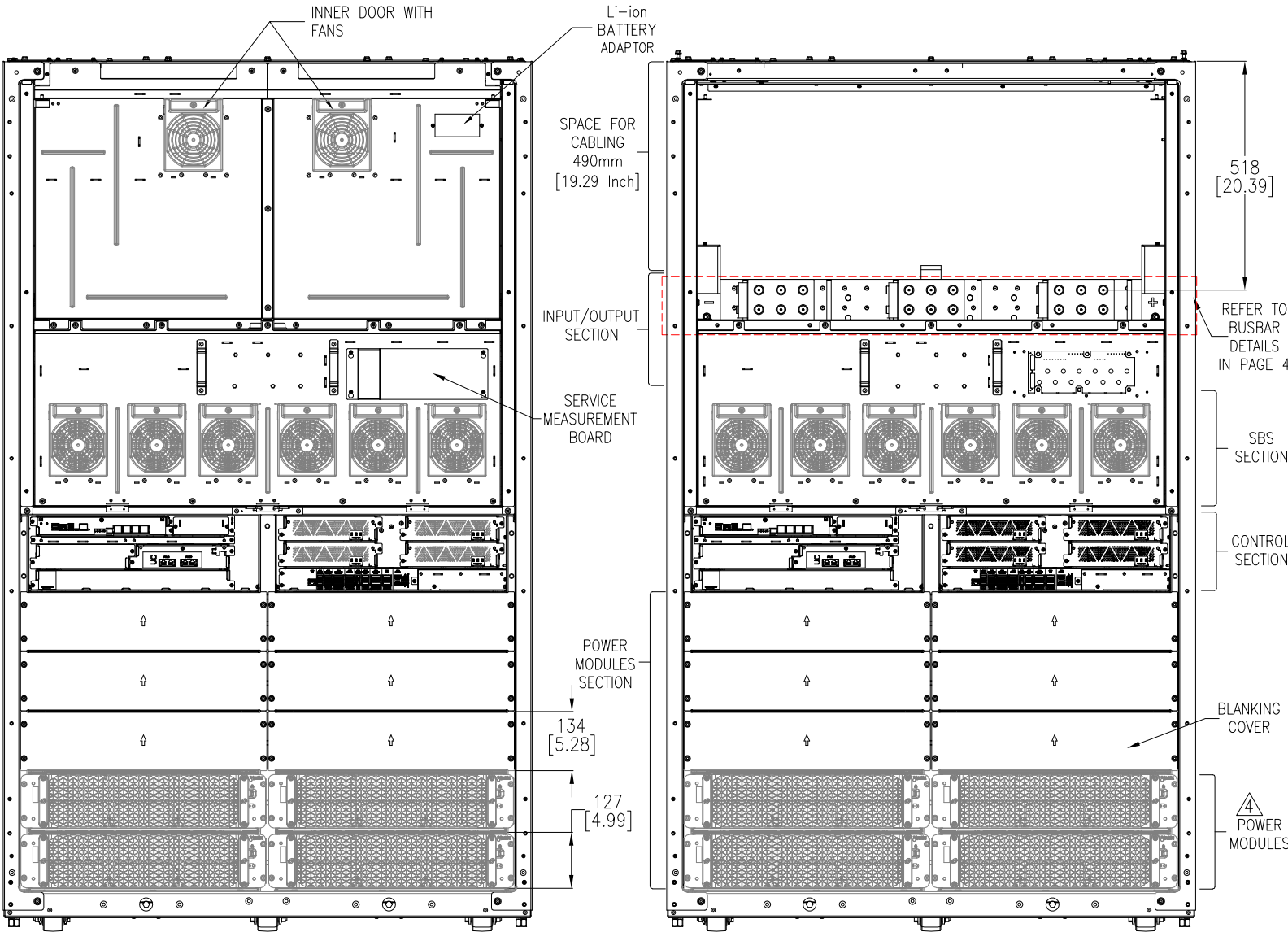
THIS DRAWING AND SPECIFICATIONS HEREIN ARE THE PROPERTY OF SCHNEIDER ELECTRIC AND SHALL NOT BE COPIED, REPRODUCED OR USED IN WHOLE OR IN PART, AS THE BASIS FOR THE MANUFACTURE OR SALE OF ITEMS WITHOUT WRITTEN PERMISSION FROM SCHNEIDER ELECTRIC. THIS DRAWING IS BASED UPON LATEST AVAILABLE INFORMATION AND IS SUBJECT TO CHANGE WITHOUT NOTICE.



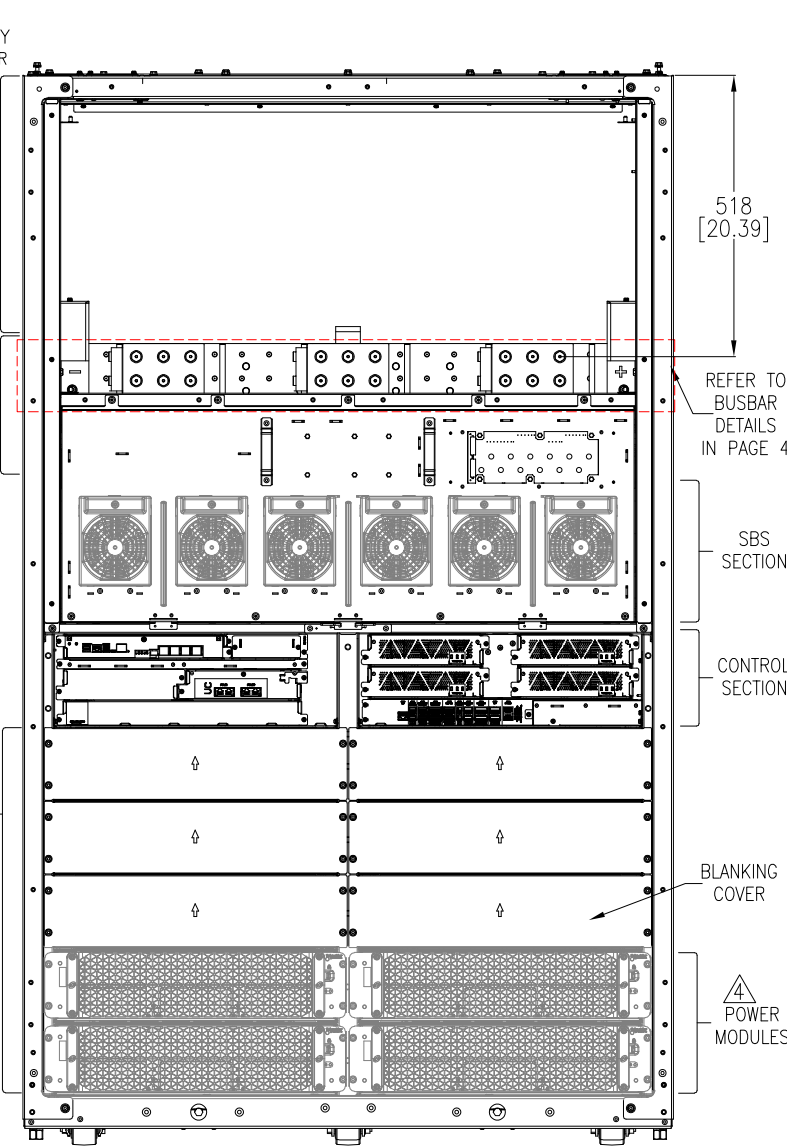
TITLE: Galaxy VXL UPS 500kW - 1250kW
Input: 380/400/415V, 3PH, 50/60Hz, Single/Dual Mains
Output: 380/400/415V, 3PH, 50/60Hz
TOP-BOTTOM VIEWS

DWG NO: GVXL500-1250KHS
DRAWN: AKSHAY/JAYAPRAKASH
ENGINEER: TENGFEI
APPROVED: Jerry LIU

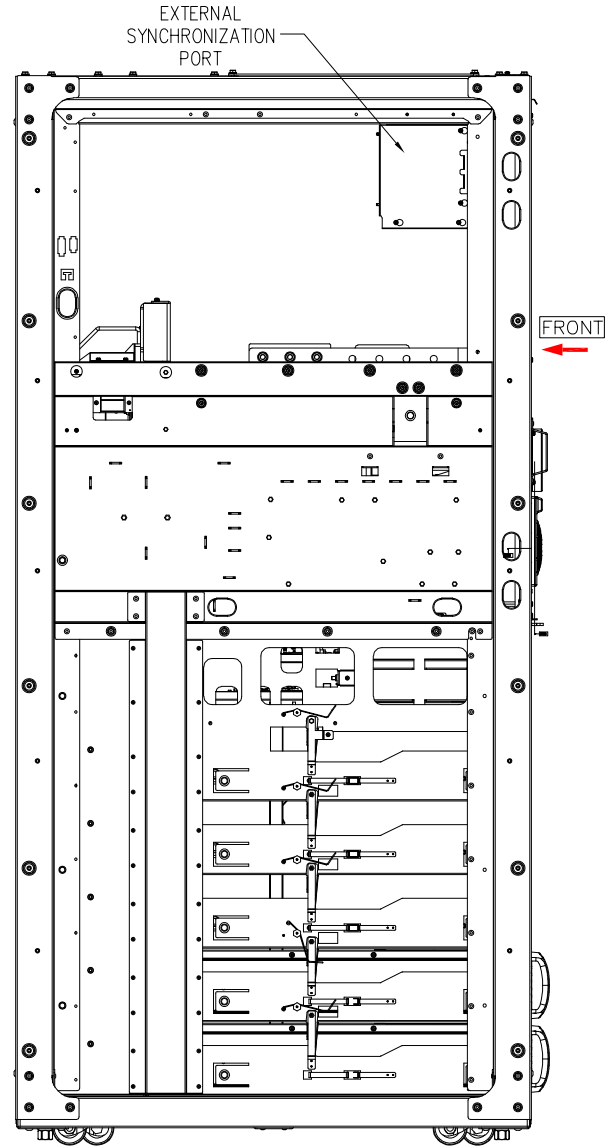
REV. 1
18-DEC-25
19-DEC-25
19-DEC-25
FIRST ANGLE PROJECTION



INTERNAL FRONT VIEW
WITHOUT DOOR & WITH INNER DOOR



INTERNAL FRONT VIEW
WITHOUT DOORS



INTERNAL LEFT SIDE VIEW
WITHOUT DOORS & SIDE PANELS

NOTES:

1. INSTALLATION SHALL COMPLY WITH ALL APPLICABLE NATIONAL, STATE AND LOCAL ELECTRICAL REGULATIONS.
2. REFER TO PRODUCT DOCUMENTATION FOR ADDITIONAL DETAILS PRIOR TO INSTALLATION AND SITE PREPARATION WORK.
3. ALL DIMENSIONS ARE IN MILLIMETERS [INCHES].
4. 500kW UPS IS SHOWN FOR ILLUSTRATION. EACH POWER MODULE IS RATED FOR 125kW AND THE UPS IS SCALABLE UP TO 1250kW. MAXIMUM 4 UPS UNITS CAN BE PARALLELED FOR FULL CAPACITY AND UPTO 4+1 UPS UNITS IN PARALLEL FOR REDUNDANCY.
5. ADDITIONAL POWER MODULES FOR UPS RATINGS OVER 500kW ARE SHIPPED SEPARATELY AND MUST BE INSTALLED STARTING WITH THE BOTTOM POSITIONS AND CONTINUING WITH UPWARD DIRECTION.

REFER TO SITE PLANNING DATA IN SYSTEM ONE LINE DIAGRAM GVXL500-1250KHS-SD FOR MORE DETAILS.

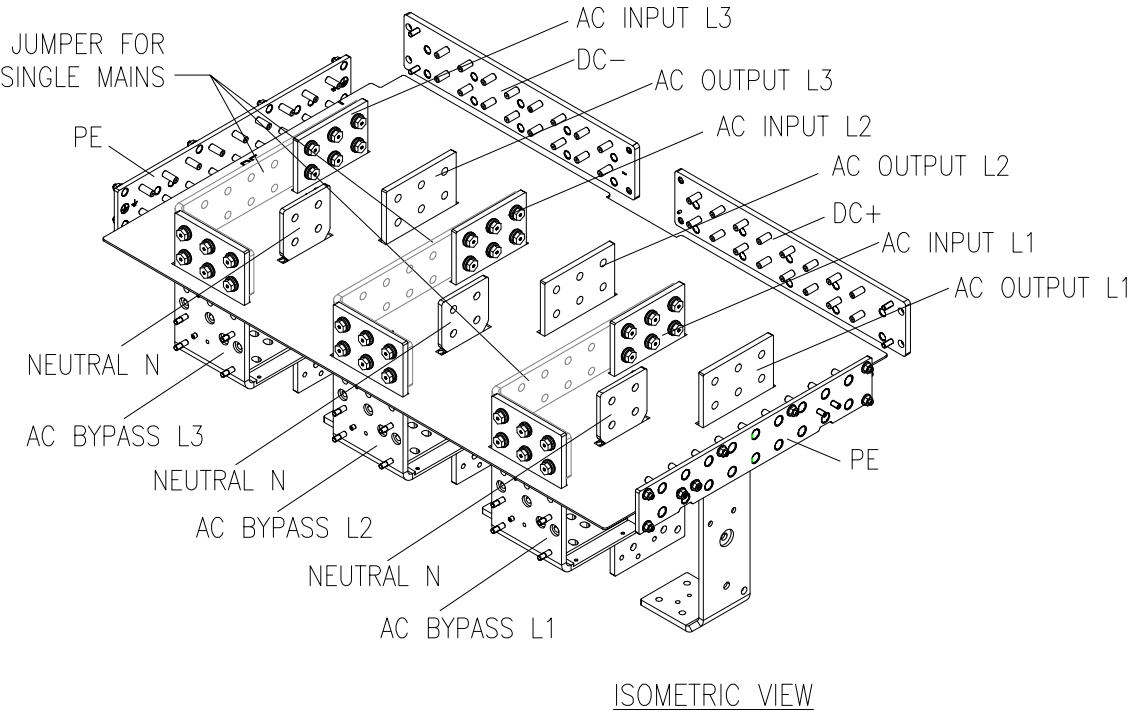
WEIGHT OF ONE POWER MODULE (GVPM125KH) IS 54kg [119 lb].

THIS DRAWING AND SPECIFICATIONS HEREIN ARE THE PROPERTY OF SCHNEIDER ELECTRIC AND SHALL NOT BE COPIED, REPRODUCED OR USED IN WHOLE OR IN PART, AS THE BASIS FOR THE MANUFACTURE OR SALE OF ITEMS WITHOUT WRITTEN PERMISSION FROM SCHNEIDER ELECTRIC. THIS DRAWING IS BASED UPON LATEST AVAILABLE INFORMATION AND IS SUBJECT TO CHANGE WITHOUT NOTICE.

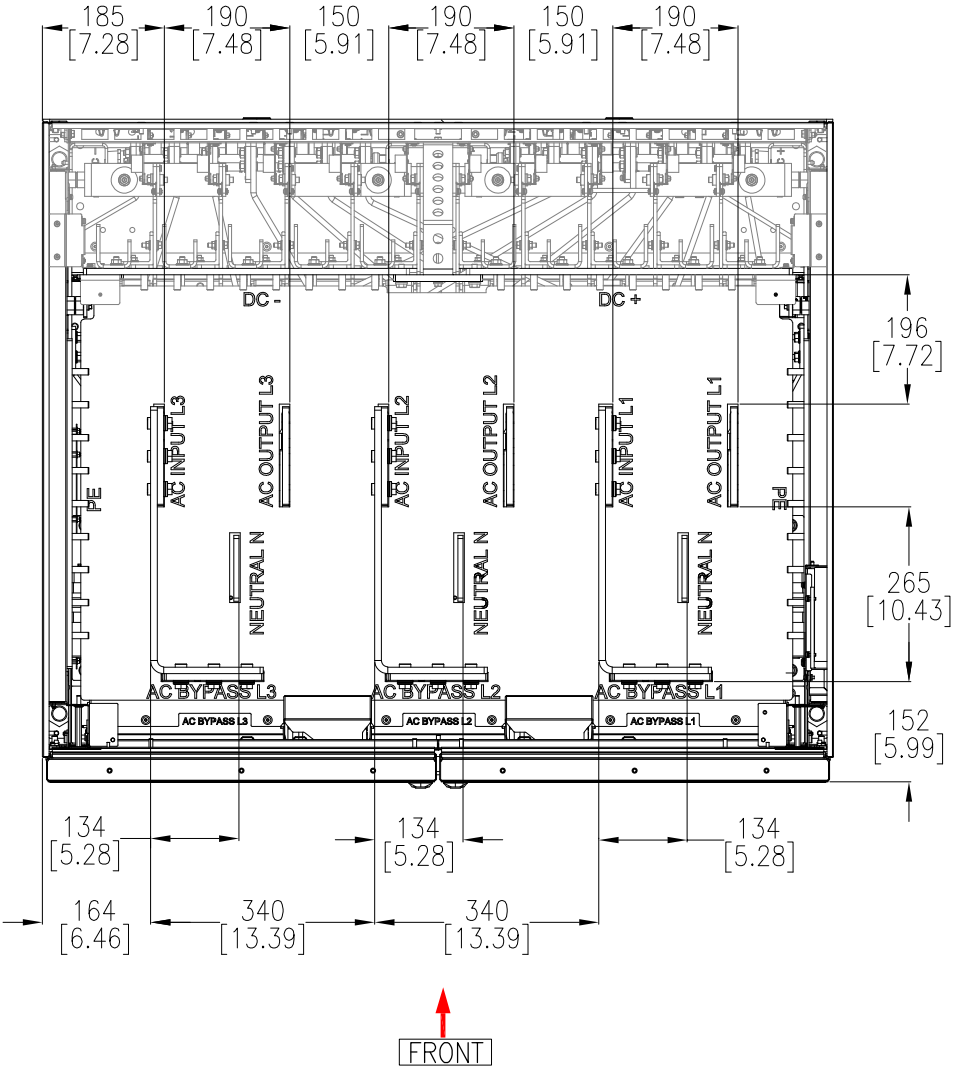


| | | | | | |
|----------|---|--------------|-----------------|-------------|------------------------|
| TITLE: | Galaxy VXL UPS 500kW - 1250kW Input: 380/400/415V, 3PH, 50/60Hz, Single/Dual Mains Output: 380/400/415V, 3PH, 50/60Hz INTERNAL VIEW | DWG NO: | GVXL500-1250KHS | REV. | 1 |
| DRAWN: | JAYAPRAKASH | 04-MAR-25 | ENGINEER: | ChenLei BAO | 05-MAR-25 |
| PROJECT: | SUBMITTAL DRAWINGS | SHEET 3 OF 6 | APPROVED: | Jerry LIU | 05-MAR-25 |
| | | | | | FIRST ANGLE PROJECTION |

INPUT/OUTPUT CONNECTIONS FOR SINGLE/DUAL MAINS



INPUT/OUTPUT CONNECTION BUSBARS FOR SINGLE/DUAL MAINS



TOP VIEW (TOP COVER NOT SHOWN)

- NOTES:
1. INSTALLATION SHALL COMPLY WITH ALL APPLICABLE NATIONAL, STATE AND LOCAL ELECTRICAL REGULATIONS.
 2. REFER TO PRODUCT DOCUMENTATION FOR ADDITIONAL DETAILS PRIOR TO INSTALLATION AND SITE PREPARATION WORK.
 3. ALL DIMENSIONS ARE IN MILLIMETERS [INCHES].
 4. MANDATORY BACKFEED PROTECTION ON BYPASS MUST BE IMPLEMENTED BY UPSTREAM INSTALLATION OF CIRCUIT BREAKER WITH SHUNT TRIP CONNECTED TO UPS – REFER TO INSTALLATION MANUAL FOR CONNECTION DETAILS.
 5. PRODUCT IS TESTED TO 100kA_{rms} IN 60ms AS SHOWN.
 6. MAXIMUM CABLE SIZE SUPPORTED IN ALL AC AND DC LOCATIONS IS 300Sq.mm/600kCMIL.
 7. TIGHTENING TORQUE: M10: 30Nm (22 lbf-ft)

THIS DRAWING AND SPECIFICATIONS HEREIN ARE THE PROPERTY OF SCHNEIDER ELECTRIC AND SHALL NOT BE COPIED, REPRODUCED OR USED IN WHOLE OR IN PART, AS THE BASIS FOR THE MANUFACTURE OR SALE OF ITEMS WITHOUT WRITTEN PERMISSION FROM SCHNEIDER ELECTRIC. THIS DRAWING IS BASED UPON LATEST AVAILABLE INFORMATION AND IS SUBJECT TO CHANGE WITHOUT NOTICE.

Schneider
Electric

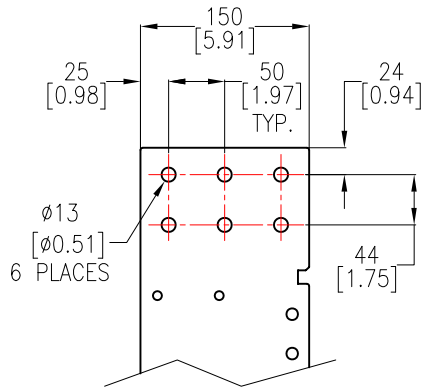
TITLE: Galaxy VXL UPS
500kW – 1250kW
Input: 380/400/415V, 3PH, 50/60Hz, Single/Dual Mains
Output: 380/400/415V, 3PH, 50/60Hz
INPUT/OUTPUT CONNECTION
PROJECT: SUBMITTAL DRAWINGS SHEET 4 OF 6

DWG NO: GVXL500-1250KHS
DRAWN: JAYAPRAKASH
ENGINEER: TENGFEI ZHANG
APPROVED: Jerry LIU

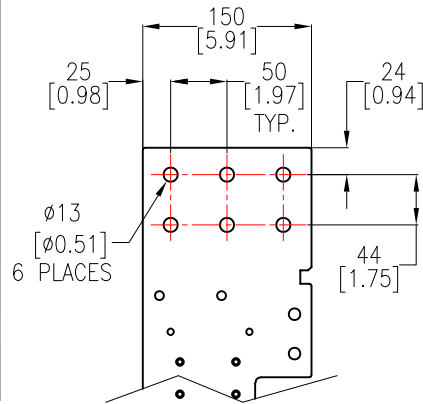
REV. 1
18-DEC-25
19-DEC-25
19-DEC-25
FIRST
ANGLE
PROJECTION

BUSBAR DETAILS

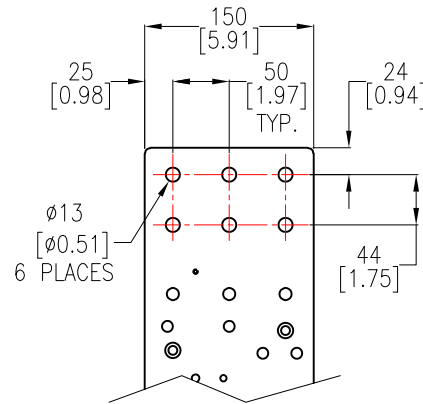
INPUT BUSBAR (MAINS)
10mm [0.39 Inch]
(L1, L2, L3)



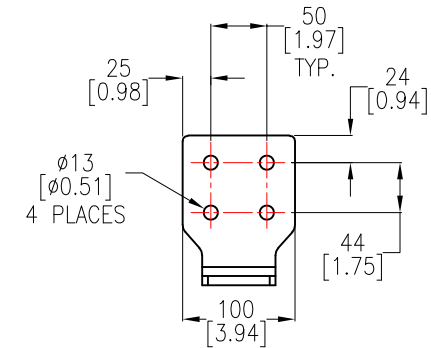
OUTPUT BUSBAR
10mm [0.39 Inch]
(L1, L2, L3)



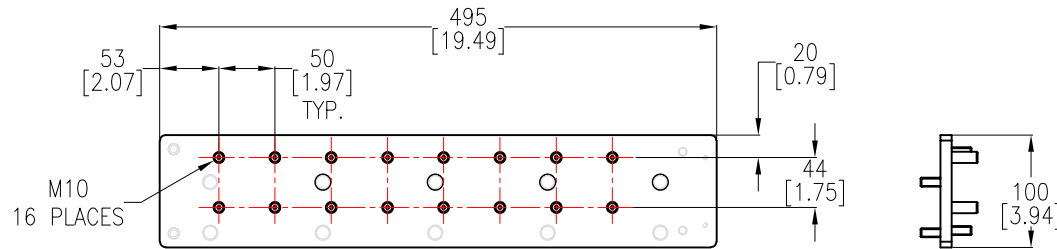
INPUT BUSBAR (BYPASS)
10mm [0.39 Inch]
(L1, L2, L3)



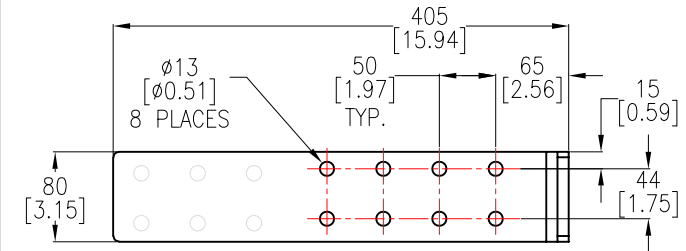
NEUTRAL BUSBAR
8mm [0.31 Inch]



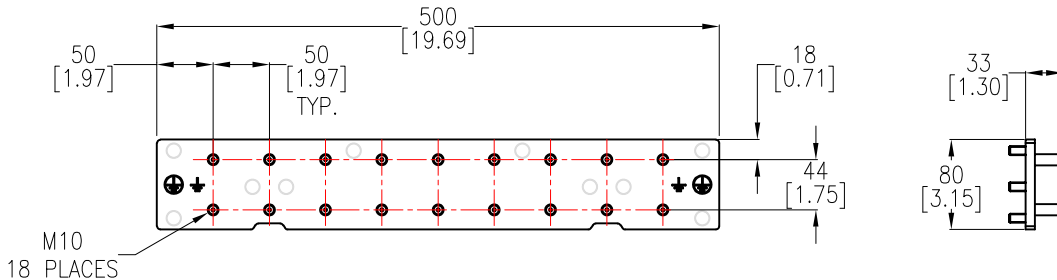
DC+/_ BUSBARS [10mm [0.39 Inch]



JUMPER BUSBAR [10mm [0.39 Inch]



PE/GROUNDING BUSBAR 8mm [0.31 Inch]



NOTES:

1. INSTALLATION SHALL COMPLY WITH ALL APPLICABLE NATIONAL, STATE AND LOCAL ELECTRICAL REGULATIONS.
2. REFER TO PRODUCT DOCUMENTATION FOR ADDITIONAL DETAILS PRIOR TO INSTALLATION AND SITE PREPARATION WORK.
3. ALL DIMENSIONS ARE IN MILLIMETERS [INCHES].

THIS DRAWING AND SPECIFICATIONS HEREIN ARE THE PROPERTY OF SCHNEIDER ELECTRIC AND SHALL NOT BE COPIED, REPRODUCED OR USED IN WHOLE OR IN PART, AS THE BASIS FOR THE MANUFACTURE OR SALE OF ITEMS WITHOUT WRITTEN PERMISSION FROM SCHNEIDER ELECTRIC. THIS DRAWING IS BASED UPON LATEST AVAILABLE INFORMATION AND IS SUBJECT TO CHANGE WITHOUT NOTICE.

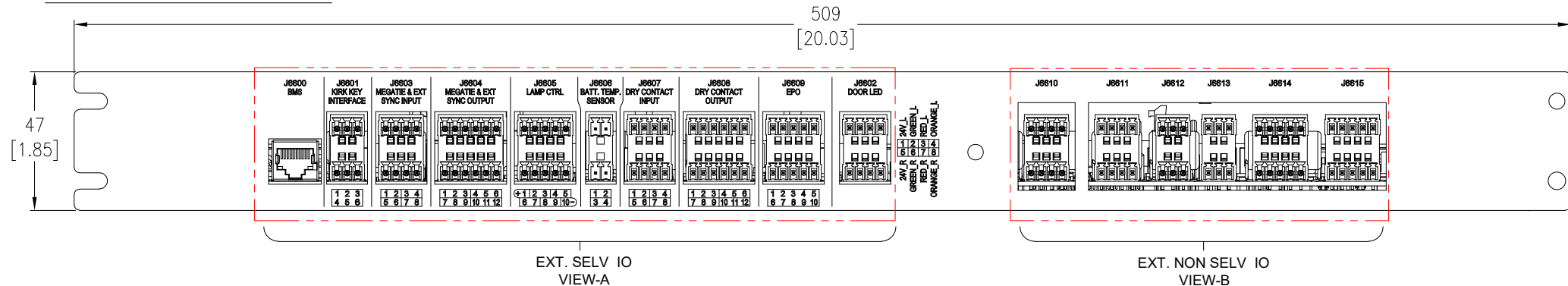
Schneider Electric

TITLE: Galaxy VXL UPS
500kW - 1250kW
Input: 380/400/415V, 3PH, 50/60Hz, Single/Dual Mains
Output: 380/400/415V, 3PH, 50/60Hz
INPUT/OUTPUT CONNECTION & BUSBARS
PROJECT: SUBMITTAL DRAWINGS SHEET 5 OF 6

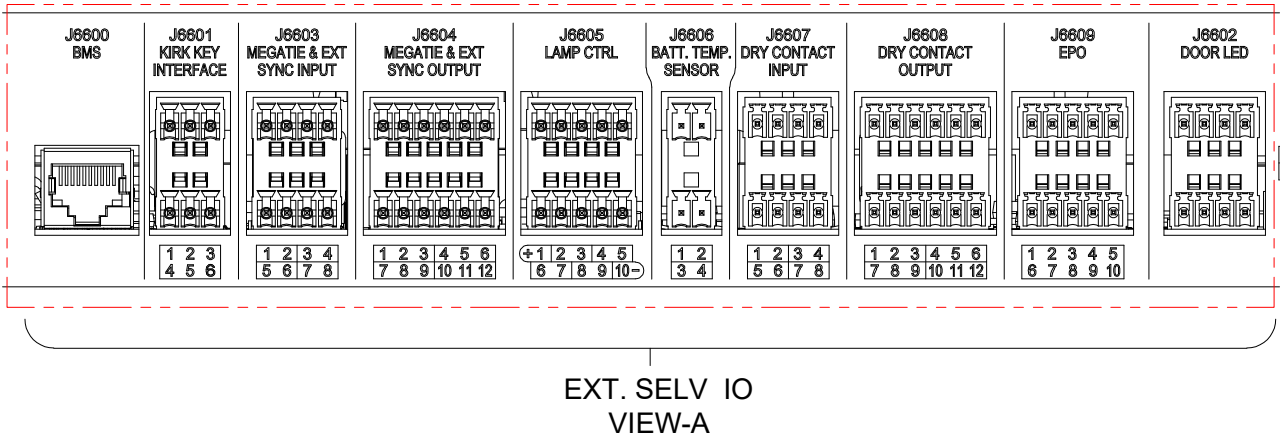
DWG NO: GVXL500-1250KHS
DRAWN: JAYAPRAKASH
ENGINEER: ChenLei BAO
APPROVED: Jerry LIU

REV. 1
FIRST ANGLE PROJECTION

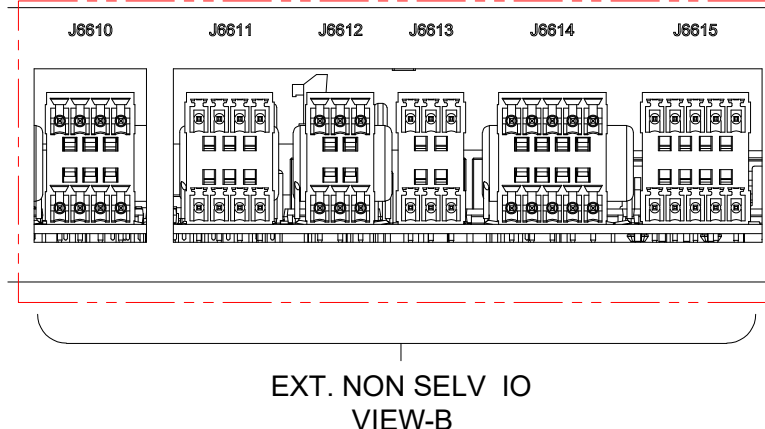
INTERFACE BOARD DETAILS



- J6600 – BMS
- J6601 – KIRK KEY
- J6603 – MEGATIE & EXT. SYNC INPUT
- J6604 – MEGATIE & EXT. SYNC OUTPUT
- J6605 – LAMP CTRL
- J6606 – BATTERY TEMP SENSOR
- J6607 – DRY CONTACT INPUT
- J6608 – DRY CONTACT OUTPUT
- J6609 – EPO
- J6602 – DOOR LED



- J6610 – BACKFEED
- J6611 – BREAKER STATUS1
- J6612 – BREAKER STATUS2
- J6613 – BONDING CONTACTOR.
- J6614 – BATTERY BREAKER TRIP STATUS 1~2
- J6615 – BATTERY BREAKER TRIP STATUS 3~4



NOTES:
1. INSTALLATION SHALL COMPLY WITH ALL APPLICABLE NATIONAL, STATE AND LOCAL ELECTRICAL REGULATIONS.
2. REFER TO PRODUCT DOCUMENTATION FOR ADDITIONAL DETAILS PRIOR TO INSTALLATION AND SITE PREPARATION WORK.
3. ALL DIMENSIONS ARE IN MILLIMETERS [INCHES].